



We're Seriously Social About

Employment and Skills

*Swipe through for wellbeing insights based on national stats
- and see the real impact we're making in Fife every day.*



1

Skills That Build Futures

From volunteering to placements, we're helping people step into work with confidence.

In 2024/25:



30

Volunteers

*supported our services – up from just **12** the year before.*

We welcomed

13

employability placements,

including school pupils, college students, and university learners.



*We partnered with local charities, including Fife Gingerbread, to support people re-entering the workforce – **offering four paid 6-month paid traineeships.***



*We hosted Work Inspiration Days at Kirkcaldy Leisure Centre, **40 S3-S4** pupils from local high schools explored careers in leisure – in partnership with KSLA and Developing the Young Workforce (DYW) Scotland*

2

Investing in Our People

At Fife Sports & Leisure Trust, learning never stops. We're proud to support every staff member to grow their skills, confidence, and potential.

In 2024/25:



56

Learning and Development sessions delivered.



*Staff completed an average of **8** hours of training each, with sessions averaging **4** hours.*



That's a total of

5,432

hours of training
*– the equivalent of over **183** full days dedicated to staff development.*

Because when our people grow, so does our impact.

3

Wellbeing in the Workplace

We know that healthy, supported staff make stronger communities.

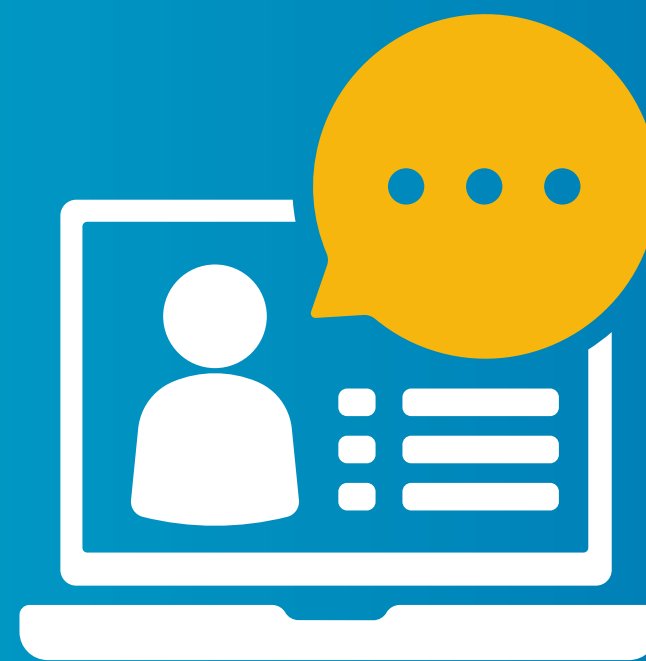
In 2024/25:



81%

*of staff **accessed wellbeing support** – from occupational health services to independent counselling.*

*Across the organisation, we have trained **Mental Health, Menopause, and Financial Champions** to support colleagues and promote a culture of care.*



We care for our people – because people are our purpose.

4

Proud to Work, Proud to Belong

We believe that when people feel valued, connected, and supported, they thrive.

In 2024/25:



In our latest staff survey,

81%

of employees reported job satisfaction – a clear reflection of the positive culture we're building together.

As of April 2025,

82%

As of April 2025, 82% of our workforce held an active Fife Sports and Leisure Trust membership, engaging with the very facilities and values we deliver to the community.



Our people don't just work here – they move, grow, and belong.